



# INSTRUCTIONS FOR USE

*Advanced, Easy to Use and Cost Effective Clinical Water Treatment Technology  
DentaPure™ Microbiological Dental Unit Water Purification System*

Keep Out Of Reach Of Children

## CAUTION

PLEASE SAVE THESE INSTRUCTIONS FOR FUTURE USE. Only selected information is contained on the cartridge packaging, therefore you should keep this sheet for future reference.

Active Ingredient: Iodine*	46%
Other Ingredients	54%

Unit	DP365VC	DP365HP
Iodinated Resin	240.0 cc	240.0 cc

\*Bonded to strong base anion exchange resin TOTAL 100%

**IN THE REMOTE EVENT THE CYLINDER OR CARTRIDGE IS BROKEN AND THE IODINATED RESIN PELLETS ARE EXPOSED, USE EXTREME CAUTION.**

### FIRST AID:

**IF IN THE EYES:** Hold eye open and rinse slowly and gently with water for 15-20 minutes. Remove contact lenses, if present, after the first 5 minutes, then continue rinsing eye. Call poison control center or doctor for treatment advice.

**IF ON SKIN OR CLOTHING:** Take off contaminated clothing. Rinse skin immediately with plenty of water for 15-20 minutes.

**IF SWALLOWED:** Call poison control center or doctor immediately for treatment advice. Have person sip a glass of water if able to swallow. Do not induce vomiting unless told to do so by the poison control center or doctor. Do not give anything by mouth to an unconscious person. Have product container or label with you when calling a poison control center or doctor, or going for treatment.

### PRECAUTIONARY STATEMENTS:

#### HAZARDS TO HUMANS AND DOMESTIC ANIMALS:

**CAUTION:** Avoid direct contact with eyes, skin and clothing. Wear protective eyewear (goggles) and gloves when handling. Wash thoroughly with soap and water after handling and before eating, drinking, chewing gum, using tobacco or using the toilet. Remove and wash contaminated clothing before reuse. Safety and effectiveness in children under the age of two has not been established.

**ENVIRONMENTAL HAZARDS:** The exposed resin pellets are toxic to fish and aquatic organisms. Do not discharge effluent containing this product into lakes, streams, ponds, estuaries, oceans or other waters unless in accordance with the requirements of a National Pollutant Discharge Elimination System (NPDES) permit, and the permitting authority has been notified in writing prior to discharge. For guidance, contact your State Water Board or regional office of the EPA.

**NOTE: USED, UNDAMAGED CARTRIDGES AND CYLINDERS ARE NOT CONSIDERED HAZARDOUS AND MAY BE WRAPPED IN NEWSPAPER AND DISPOSED OF IN THE REGULAR TRASH.**

**DIRECTIONS FOR USE:** It is a violation of federal law to use this product in any manner inconsistent with its labeling. To obtain maximum bacteriological reduction, dental unit waterlines are to be cleaned with an approved dental unit waterline agent prior to initial installation of DentaPure™ Cartridges.

### GENERAL PRECAUTIONS

**USES:** DentaPure Cartridge is for use on dental unit waterlines attached to the dynamic dental instruments. Used according to labeling, this cartridge reduces bacteria from the water supplied through the instruments to a level that will meet

or exceed the current ADA recommendations for water quality having a maximum of 200 cfu/ml.

**IMPORTANT** Use DentaPure Cartridge on dental unit waterlines only, not for general consumption. While the unit will perform above these limits, it is recommended that the dental unit water have a pH level of less than 8 and not have a chlorine level greater than 1 ppm. Do not use heated water. Heated water will promote the growth of bacteria and the buildup of biological film in the water line leading to the DentaPure unit. Water pressure must not exceed 45 psi.

Once the cartridge is in place, the supply water will pass through the cartridge's iodinated resin bed, purifying the water delivered by the dental instrument. To maintain a continuous iodine presence within the dental tubing, install a new cartridge immediately after removing the used cartridge. The cartridge must be left in place during times that the dental unit is not used (weekends, vacations, etc).

Adherence to CDC/ADA guidelines for aseptic procedures including a 2 minute morning flush, a 20-30 second flush between patients, and hand piece sterilization must be continued after the installation of the cartridge.

Change the cartridge if the level of iodine output falls to less than 0.5 ppm. Use iodine sensitive test strips to verify performance. See the chart below for suggested change intervals. To change cartridge, follow installation instructions. Remove the used cartridge and install the new DentaPure™ Cartridge. Operate the dental instrument to check flow and verify that the unit is ready for use. Install a new water check-off sheet. Dispose of the old cartridge according to disposal instructions. Shut off water to dental unit when not in use.

**STORAGE:** Store at room temperature in original packaging, away from children, pets and direct sunlight. Avoid excessive heat. Do not allow cartridge to freeze. Do not store in open or unlabeled containers.

**DISPOSAL:** Securely wrap cartridge in newspaper and discard in trash.

### TROUBLESHOOTING

Slow or no water flows through cartridge—make sure new cartridge was installed properly.

Air leak from fitting, contact your dental dealer for replacement parts.

Discoloration of the tubing from blue to green or black is normal and is not a concern.

Initial dark discoloration of water is caused by release of activated carbon. Operate water until flow appears clear.

### Suggested Use Table:

DENTAPURE Unit Size	If Water Usage Records Are Kept	If Water Usage Records are NOT Kept	If Iodine Content is Monitored
DP365VC & DP365HP	2,400 Liters	365 Calendar Days	Change when iodine output falls to less than 0.5 ppm

## Installation Instructions

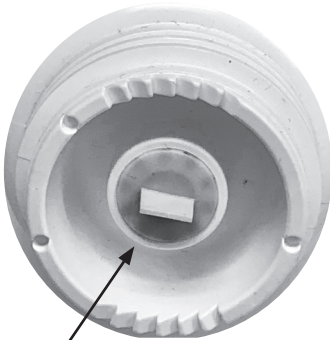
### DentaPure™ DP365VC Cartridge New and Replacement Installation onto a VistaClear™ DP CVV1000-DP Centralized Waterline Treatment System

#### Installing DentaPure™ Cartridge and Carbon Block Filter on a NEW System

1. Remove the tabs from the top of the DentaPure™ Cartridge (DP365VC) and the Carbon Block Filter (CVR9725).
2. Thread the cartridge and filter onto the system manifold in the appropriate locations (see diagram) by turning counter-clockwise. Do not cross thread. Hand-tighten the cartridge and filter while supporting the metal manifold.
3. Follow the system start-up instruction included in the VistaClear™ DP Centralized Waterline Treatment System CVV1000-DP manual.
4. Note the installation date to ensure replacement timing.

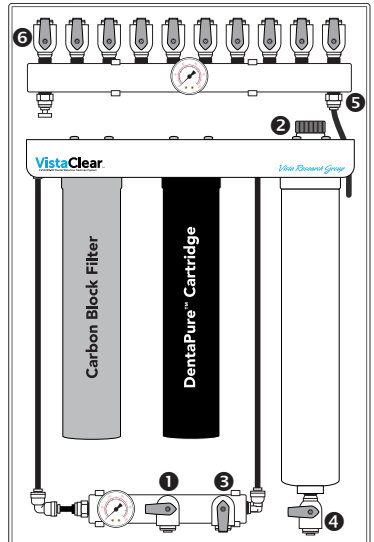
#### Annual Replacement Procedure

1. Unthread both the expired DentaPure Cartridge (DP365VC) and the expired Carbon Block Filter (CVR9725) from the system manifold by turning clockwise. Support the system by holding the manifold while unthreading the cartridge and filter.
2. Discard the expired cartridge and filter in the normal trash.
3. Remove the tabs from the top of the new cartridge and filter, then thread both onto the system manifold in the appropriate locations (see diagram) by turning counter-clockwise. Do not cross thread. Hand-tighten the cartridge and filter while supporting the metal manifold.
4. After the DentaPure Cartridge and Carbon Block Filter have been hand-tightened, water will start to flow through the system. Open the drain valve on the bottom of the mixing chamber, and allow the water to run to the drain for ten (10) minutes to flush the new cartridge and filter.
5. Close the drain valve on the mixing chamber and check the system for any leaks. If a leak is detected, immediately turn off the water supply and open the drain valve on the mixing chamber to relieve the water pressure. Attend to the leak then repeat the steps to check for additional leaks.
  - a. If a DP365VC cartridge has been previously installed and treatment water output from dynamic instruments has remained under 500 CFU/mL, no further steps are necessary and the system is now ready for use. If CFU counts are outside of the EPA current standard for potable water guidelines, begin the Purge & Clean procedure (as described in the VistaClear DP Centralized Waterline Treatment System manual) to ensure all waterlines are clean and ready for the installation of your replacement DentaPure Cartridge.
6. Note the installation date to ensure replacement timing.



Top cartridge view  
Remove tab prior to installation

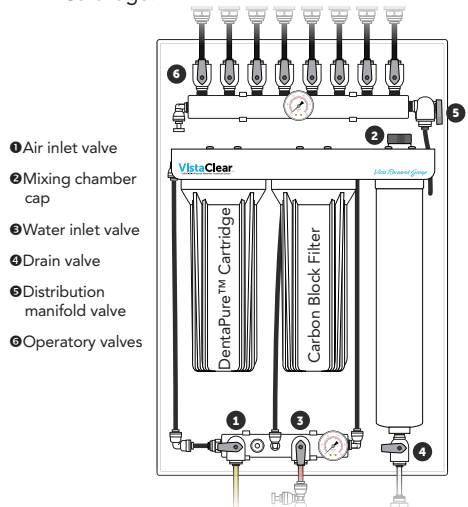
- ❶ Water inlet valve
- ❷ Mixing chamber cap
- ❸ Air inlet valve
- ❹ Drain valve
- ❺ Distribution manifold valve
- ❻ Operatory valves




# DentaPure™ DP365HP Cartridge and Carbon Block Filter Installation onto a VistaClear™ CVV1000-28-HP Centralized Water Filtration System

Note: The DP365HP is a non-refillable container.

1. Turn off the cold-water inlet on the lower manifold of the VistaClear™ Centralized Water Filtration System ("system") to stop water flow to the system.
2. Open the drain valve on the lower end of the mixing chamber to relieve pressure from the system.
3. Open the air valve for a few seconds to purge any remaining water from the mixing chamber. Once only air is emerging from the drain valve, turn OFF the air valve.
4. When the pressure gauges on the system register "0," use the sump wrench supplied with the system to remove the left and center filter sumps. Support the system by holding the filter manifold while loosening the sumps.
  - a. If replacing the DP365HP cartridge and Carbon Block Filter, remove and discard the expired cartridge/filter in the normal trash.
5. Wash and rinse the filter sumps. Wipe the center section of the filter caps with an alcohol wipe to clean.
6. Replace the O-ring in each filter sump with the supplied, pre-lubricated O-rings. Discard old O-rings.
7. Completely remove the plastic wrap from both the Carbon Block Filter (CVR9722) and the DentaPure™ Cartridge (DP365HP). Note the installation date to ensure replacement and the SN# on the label attached to this plastic wrap prior to discarding.
8. Carefully lower the Carbon Block Filter into the RIGHT filter sump, and the DentaPure Cartridge into the LEFT filter sump (see illustration), making sure the open-end caps are facing "up" in the housing.
9. Making certain the cartridge and filter are centered in their housings, carefully thread the sumps onto their filter caps on the manifold. Do not cross thread. Hand-tighten the sump while supporting the metal manifold.
10. After ensuring that both sumps have been hand-tightened, turn on the system water supply by turning the handle on the water valve into the filter housings.
11. Open the drain valve on the bottom of the mixing chamber, allowing air to be purged from the system. Once water has filled both filter sumps, water will begin to flow to the drain. Allow the water to run to the drain for ten (10) minutes to flush the new cartridge.
12. Close the drain valve on the mixing chamber and check the system for any leaks. If a leak is detected, immediately turn off the water supply and open the drain valve on the mixing chamber to relieve the water pressure. Attend to the leak then repeat the steps to check for additional leaks.
13. If this is the first time the DentaPure Cartridge is being installed with the VistaClear Centralized Water Filtration System (CVV1000-28-HP), begin the Purge & Clean procedure (as described in the system manual) to ensure all waterlines are clean and ready for use.
  - a. If a DP365HP cartridge has been used previously and treatment water output from dynamic instruments has remained under 500 CFU/mL, no further steps are necessary and the system is now ready for use. If CFU counts are outside of the EPA current standard for potable water guidelines, begin the Purge & Clean procedure (as described in the VistaClear Centralized Water Filtration system manual) to ensure all waterlines are clean and ready for the installation of your replacement DentaPure Cartridge.



 Crosstex International, Inc.  
1733 W. Parkside Lane, Phoenix, AZ 85027 USA  
800-531-2221 | www.crosstex.com

EPA Reg. No. 74245-5 / EPA Est No. 74245-AZ-1

Made in USA

©2020 Crosstex International, Inc. Part No. VM1074 / REV A - 01/2020

All product names are trademarks of Crosstex International, Inc., a Cantel Medical Company, its affiliates or related companies, unless otherwise noted.

**CROSSTEX**  
A CANTEL MEDICAL COMPANY